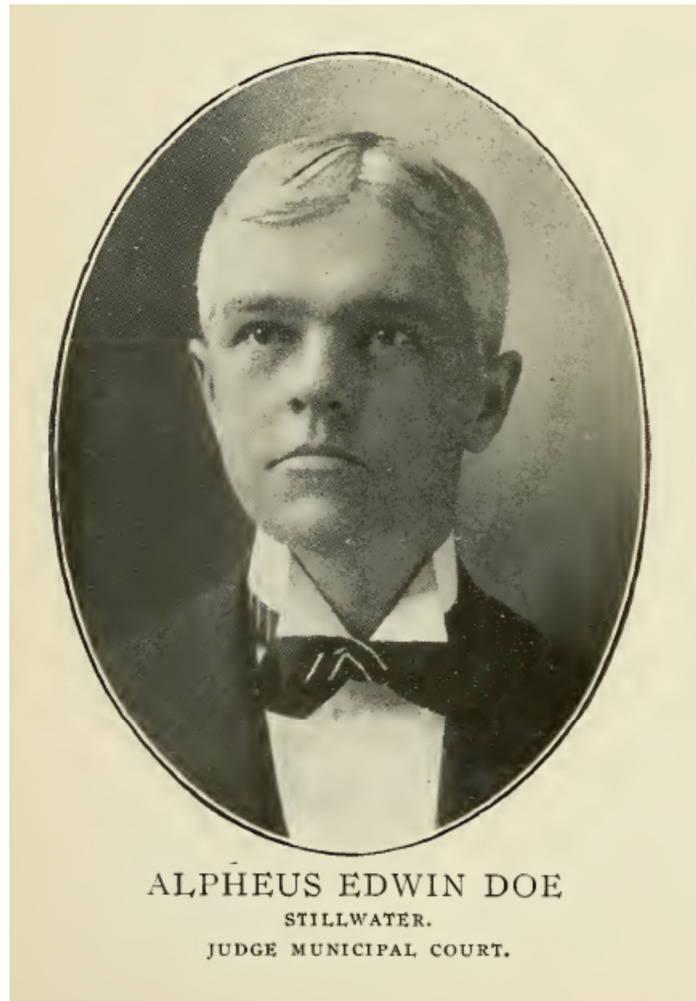


**In Memoriam**

**Judge Alpheus Edwin Doe**

**November 2, 1863 - November 9, 1930**



**Washington County Bar Association  
District Court  
Nineteenth Judicial District  
Stillwater, Minnesota**

**November 24, 1930**

STATE OF MINNESOTA  
COUNTY OF WASHINGTON

DISTRICT COURT  
NINETEENTH JUDICIAL DISTRICT

IN THE MATTER OF THE PROCEEDINGS  
UPON THE DEATH OF HONORABLE A. E. DOE.

TO THE HONORABLE ALFRED P. STOLBERG,  
JUDGE OF THE ABOVE NAMED COURT:

The undersigned, a committee appointed by you, respectfully present for the consideration of the Court the following memorial upon the life and character of the Honorable A. E. Doe, who died on Sunday, the 9th day of November, 1930:

Judge A. E. Doe, who ably and honorably served the people of Washington County for thirty-three years, was of New England ancestry. His father, the late Alpheus K. Doe, was for many years Clerk of the District Court, and mother, Mary Brown Doe, natives of Maine, settled in Stillwater in 1857. They were leaders in the business and social life of Stillwater.

Judge Doe was born in the City of Stillwater on November 2nd, 1863. He was graduated from the Stillwater High School when seventeen years of age. He acquired his legal education in the Law Department of the State University of Michigan, from which he was graduated in 1886. In the same year he was admitted to the Bar of Minnesota, and began the practice of his profession in Stillwater.

November 2nd, 1897, he was elected judge of the Municipal Court of Stillwater and served nine years. In November, 1906, he was elected Judge of Probate of Washington County, and began his duties the first Monday in January, 1907, and served continuously until the time of his death on November 9th, 1930. He was United States Commissioner of the Fourth District for seven years, and a Court Commissioner for twelve years.

He was a member of the Ascension Church of Stillwater, the Masons, Elks and numerous Fraternal organizations; and he served seven years as a member of Company K. First Regiment. He belonged to the Washington County Bar Association and long acted as its secretary. For many years he was Secretary of the Citizens Memorial Day Association, and because of his activities in that association, he was elected an honorary member of the Muller-Crook Post, G. A. R.

On September 9th, 1891, he was united in marriage with Miss Bertha Sargent, daughter of the late Mr. and Mrs. Londrus Sargent of Stillwater.

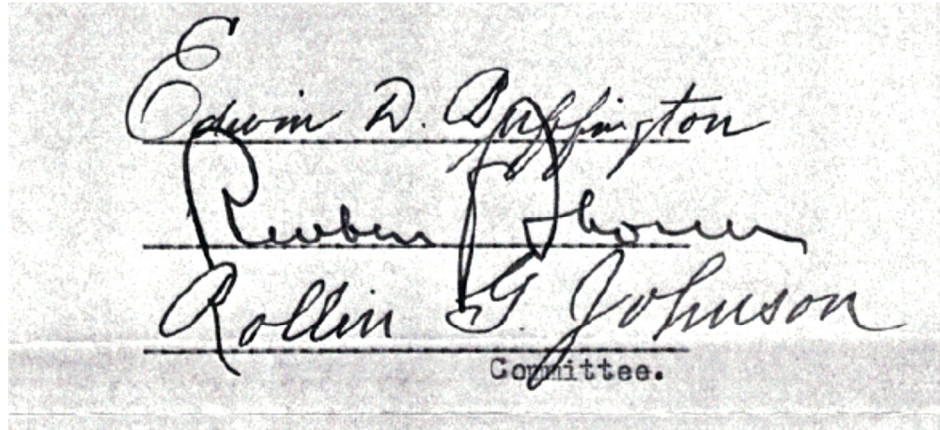
He is survived by his widow, a daughter, Mrs. Rupert Taylor of Chicago, two grandsons and three brothers, Fred P. Doe of Minneapolis, D. H. Doe of Stearnsville, Washington, and R. H. Doe of Stillwater.

Judge Doe was endowed by nature with that intelligence and wisdom which admirably fitted him for the discharge of the important duties of his office. He was a logical and clear thinker. While he presided on the Bench with dignity and administered justice with strict impartiality, all persons, whether lawyers or laymen, who appeared before him were charmed by his kindly interest, sincerity, cheerfulness and humor. He was widely known throughout the State of Minnesota, and for many years during the illness or temporary absence of the Judges of Probate Court of Ramsey County, he acted for them as a Judge and was as much loved and respected by the Bar and people of that county, who appeared before him, as he was by the Bar and people of Washington County.

Judge Doe was active and prominent in all matters pertaining to the welfare and progress of his home city. He was a lover of his fellow men. He was genial, and radiated sunshine and happiness wherever he went. He was especially kind and gracious to widows and children who came under his protecting arm as a Judge, and he zealously safeguarded their interests. He was a patriotic citizen, a good neighbor, a sympathizing friend of those in trouble and an upright judge. In an article in the Daily Gazette, commenting upon the virtues of Judge Doe, it was stated that he was "the most popular man in Stillwater and known to more men, women and children than any other individual in our city."

The members of the Bar of Washington County lament the passing of Judge Doe, and aver that that they will always cherish and revere the memory of his distinguished and honorable career as a lawyer and Judge, the nobility of his life and character, the kindness of his disposition and the warmth of his friendship.

Dated at Stillwater, Minnesota, this 24th day of November, 1930.



Edwin D. Spaffington  
Reuben Johnson  
Rollin G. Johnson  
Committee.

## Appendix

From 1 *History of the Bench and Bar of Minnesota* 248-249 (1904):

### ALPHEUS EDWIN DOE.

Alpheus Edwin Doe was born in Stillwater, November 2, 1863. He received his early education in the Stillwater public schools and completed his studies at the University of Michigan. He studied for the bar in

the law department of the Michigan university, and with Fayette Marsh of Stillwater.

He was admitted to practice June, 1886, at Ann Arbor, Michigan, and in July of that year at Stillwater.

Judge Doe is secretary of the Washington county (Minnesota) bar association, and also municipal judge of the city of Stillwater, to which office he was first chosen in November, 1897, for a term of four years, and re-elected in November, 1901. He also holds the position of court commissioner of Washington county.

Judge Doe is a member of the Modern Woodmen of America, and he served seven years in Company K. N. G. S. M.

He was married to Miss Bertha Sargent of Stillwater, September 9, 1891.

In politics he has always acted with the republican party.

Judge Doe was associated in the practice of law with the late J. N. Castle for nine years, the partnership only closing with Mr. Castle's death.

From Augustus B. Easton, ed., 1 *History of the St. Croix Valley* 293-294 (1909):

Alpheus E. Doe, judge of the Probate Court of Washington county, Minnesota, was born in Stillwater, Minn., November 2, 1863, son of Alpheus K. and Mary P. (Brown) Doe, natives of Maine. They came West in July, 1857, and located at Stillwater, Minn., where his father engaged in the lumber business two years, then

with Isaac Staples and Samuel P. Hersey, who also came from Bangor, Me., engaged in the mercantile business for a number of years; also with the late L. R. Torinus, during which time he was city clerk, also served as mayor and county treasurer. He was a member of the board of county commissioners, 1892; clerk of the district court, and he continued in this office twelve years, and a member of State Prison Board three years also a member of the volunteer fire department twenty years. He was prominent in local Masonic circles, K. of P. and in public affairs. He died June 20, 1907, in his seventieth year. His wife died in 1891 at the age of fifty-five years.

The subject of this sketch acquired the rudiments of an education in the public schools of Stillwater and read law at the University of Michigan, passed his examination and was admitted to the bar in 1886. He then began his practice at Stillwater, his present home. In 1881 he was elected judge of the Municipal Court and continued to fill that office for nine consecutive years. In 1906 he was elected probate judge for the term of two years. He was young, enthusiastic, hopeful and ambitious when he was elected judge. He had been disciplined to hard work and taught to do with promptness and energy whatever was necessary to accomplish a worthy object. Thus equipped he began his profession. With will and energy he has carved out success where others have failed. He is thoroughly loyal

to his friends; but knows neither friend nor foe in his judicial opinions. He is a thorough student, conservative and impartial. Judge Doe is a member of the Masons, K. of P., M. W. A., Independent Order of Foresters, and was a member of Company K, First Regiment, for seven years; United States Commissioner of the fourth district for seven years, and a court commissioner for twelve years. He married September 9, 1891, Bertha Sargent; and they have one child, Hortense M.

### Credit

The photograph on the first page is from *Men of Minnesota* (1902).

Posted MLHP: July 5, 2020.